

## ZZ Series Pressure Performance Data

		2 PSIG		3 PSIG		4 PSIG		5 PSIG		6 PSIG		7 PSIG	
Model	Blower Speed (rpm)	Inlet Flow (CFM)	Shaft Power (BHP)	Inlet Flow (CFM)	Shaft Power (BHP)	Inlet Flow (CFM)	Shaft Power (BHP)	Inlet Flow (CFM)	Shaft Power (BHP)	Inlet Flow (CFM)	Shaft Power (BHP)	Inlet Flow (CFM)	Shaft Power (BHP)
ZZ2L	2800	91.9	1.1	84.8	1.6	81.3	2.1	77.7	2.7	74.2	3.2	70.7	3.8
	3250	109.5	1.2	102.5	1.9	98.9	2.4	95.4	3.1	91.9	3.8	88.3	4.3
	3560	120.1	1.3	116.6	2.0	113.1	2.7	109.5	3.4	106.0	4.0	102.5	4.7
	5275	190.8	2.0	187.3	3.0	183.7	4.0	180.2	5.1	176.7	6.0	173.1	7.1
ZZ3L	1760	148.4	1.7	141.3	2.5	134.3	3.4	130.7	4.3	123.7	5.1	120.1	6.0
	2265	201.4	2.1	194.3	3.4	187.3	4.4	180.2	5.5	176.7	6.7	173.1	7.8
	2770	250.9	2.7	243.8	4.0	240.3	5.4	233.2	6.8	229.7	8.2	222.6	9.5
	3600	339.2	3.5	328.6	5.2	325.1	7.1	318.0	8.9	314.5	10.6	311.0	12.5
ZZ4L	1760	250.9	2.8	243.8	4.3	233.2	5.6	226.1	7.1	219.1	8.6	215.5	9.9
	2190	325.1	3.5	314.5	5.2	307.4	7.1	300.4	8.9	293.3	10.6	286.2	12.5
	2620	399.3	4.2	388.7	6.3	381.6	8.4	371.0	10.6	367.5	12.7	360.4	14.9
	3600	565.4	5.8	554.8	8.7	547.7	11.7	540.6	14.6	533.6	17.4	526.5	20.4
ZZ5L	1500	452.3	4.8	441.7	7.2	431.1	9.7	420.5	12.1	413.4	14.5	406.4	16.9
	1760	540.6	5.6	530.0	8.4	519.4	11.3	508.8	14.2	501.8	17.0	494.7	19.8
	2100	653.7	6.7	643.1	10.2	632.5	13.5	625.4	16.9	614.8	20.4	607.8	23.7
	2850	908.1	9.1	897.5	13.8	886.9	18.4	876.3	23.1	869.3	27.6	862.2	32.3

Performance based on inlet air at standard temperature of 68°F, an ambient pressure of 14.7psia and 36% relative humidity. For performance at non-standard conditions, contact your authorized Eurus Blower representative. S=Screwed connections std. NPT. F=Flange connections. Intake and outlet pipe connections are same type and size.

## ZZ Series Pressure Performance Data

		2 PSIG		3 PSIG		4 PSIG		5 PSIG		6 PSIG		7 PSIG		9 PSIG		10 PSIG		12 PSIG		13 PSIG	
Model	Blower Speed (rpm)	Inlet Flow (CFM)	Shaft Power (BHP)	Inlet Flow (CFM)	Shaft Power (BHP)	Inlet Flow (CFM)	Shaft Power (BHP)	Inlet Flow (CFM)	Shaft Power (BHP)	Inlet Flow (CFM)	Shaft Power (BHP)	Inlet Flow (CFM)	Shaft Power (BHP)	Inlet Flow (CFM)	Shaft Power (BHP)	Inlet Flow (CFM)	Shaft Power (BHP)	Inlet Flow (CFM)	Shaft Power (BHP)	Inlet Flow (CFM)	Shaft Power (BHP)
ZZ2M	2800	42.4	0.5	38.9	0.8	35.3	1.1	31.8	1.3	28.3	42.4	26.5	1.9	24.7	2.4						
	3250	49.5	0.5	45.9	0.9	42.4	1.2	40.6	1.5	38.8	49.5	35.3	2.1	33.6	2.8	31.8	3.1				
	3560	56.5	0.7	53.0	0.9	49.5	1.3	49.5	1.7	45.9	53.0	42.4	2.4	40.6	3.1	38.9	3.5				
	5275	91.9	0.9	88.3	1.5	84.8	2.0	84.8	2.5	81.3	81.3	77.7	3.6	74.2	4.6	72.4	5.1	70.7	6.2		
ZZ3M	1760	81.3	0.9	77.7	1.5	70.7	1.9	67.1	2.4	63.6	77.7	63.6	3.5	56.5	4.4						
	2265	109.5	1.2	106.0	1.9	102.5	2.5	98.9	3.2	95.4	98.9	91.9	4.4	88.3	5.8	84.8	6.3				
	2770	141.3	1.5	137.8	2.3	130.7	3.1	127.2	3.9	123.7	123.7	123.7	5.5	116.6	7.0	113.1	7.8	109.5	9.4		
	3600	190.8	2.0	183.7	3.0	180.2	4.0	176.7	5.1	173.1	159.0	169.6	7.1	166.1	9.1	162.5	10.2	159.0	12.2		
ZZ4M	1760	173.1	1.9	166.1	2.8	159.0	3.9	151.9	4.8	148.4	151.9	144.9	6.8	137.8	8.7	134.3	9.7				
	2190	222.6	2.4	215.5	3.6	208.5	4.8	204.9	6.0	197.9	190.8	194.3	8.4	187.3	10.9	183.7	12.1				
	2620	272.1	2.8	265.0	4.3	258.0	5.8	254.4	7.2	247.3	229.7	243.8	10.2	236.7	13.0	233.2	14.5				
	3600	385.2	3.9	378.1	5.9	371.0	7.9	367.5	9.9	360.4	314.5	356.9	13.9	349.8	17.8	346.3	19.8				
ZZ5M	1500	265.0	2.8	258.0	4.3	250.9	5.8	243.8	7.2	236.7	226.1	233.2	10.1	222.6	13.0	219.1	14.3	212.0	17.3	208.5	18.8
	1760	318.0	3.4	307.4	5.1	300.4	6.7	296.8	8.4	289.8	268.6	286.2	11.8	275.6	15.2	272.1	16.9	265.0	20.4	261.5	22.0
	2100	385.2	4.0	378.1	6.0	371.0	8.0	364.0	10.1	356.9	318.0	353.4	14.1	342.8	18.1	339.2	20.2	332.2	24.3	328.6	26.3
	2850	537.1	5.5	526.5	8.2	523.0	10.9	515.9	13.7	508.8	434.6	505.3	19.2	494.7	24.7	491.2	27.5	484.1	33.0	480.6	35.7

Performance based on inlet air at standard temperature of 68°F, an ambient pressure of 14.7psia and 36% relative humidity. For performance at non-standard conditions, contact your authorized Eurus Blower representative. S=Screwed connections std. NPT. F=Flange connections. Intake and outlet pipe connections are same type and size.

## ZZ Series Vacuum Performance Data

		2"HG		4"HG		6"HG		8"HG		10"HG		12"HG		14"HG	
Model	Blower Speed (rpm)	Inlet Flow (CFM)	Shaft Power (BHP)	Inlet Flow (CFM)	Shaft Power (BHP)	Inlet Flow (CFM)	Shaft Power (BHP)	Inlet Flow (CFM)	Shaft Power (BHP)	Inlet Flow (CFM)	Shaft Power (BHP)	Inlet Flow (CFM)	Shaft Power (BHP)	Inlet Flow (CFM)	Shaft Power (BHP)
ZZ2L	2800	95.4	0.4	88.3	0.9	81.3	1.5	77.7	2.0	70.7	2.5				
	3250	113.1	0.5	106.0	1.2	102.5	1.7	95.4	2.4	88.3	3.0	81.3	3.6		
	3560	127.2	0.7	120.1	1.3	113.1	2.0	106.0	2.7	102.5	3.4	95.4	4.0		
	4165	151.9	0.7	144.9	1.5	137.8	2.3	130.7	3.1	127.2	3.9	120.1	4.7		
	5275	194.3	0.9	187.3	1.9	183.7	3.0	176.7	3.9	169.6	5.0	166.1	5.9	159.0	7.0
ZZ3L	1760	155.5	0.8	144.9	1.6	137.8	2.5	127.2	3.4	116.6	4.2	109.5	5.1		
	2265	208.5	1.1	197.9	2.1	187.3	3.2	180.2	4.3	169.6	5.4	159.0	6.6		
	2770	261.5	1.3	250.9	2.7	240.3	4.0	229.7	5.4	222.6	6.7	212.0	8.0		
	3600	346.3	1.7	335.7	3.5	325.1	5.2	318.0	7.0	307.4	8.7	296.8	10.5	286.2	12.2
ZZ4L	1760	268.6	1.3	254.4	2.7	243.8	4.2	233.2	5.5	219.1	7.0	208.5	8.3		
	2190	342.8	1.7	328.6	3.5	314.5	5.2	303.9	7.0	293.3	8.7	282.7	10.5		
	2620	413.4	2.0	399.3	4.2	388.7	6.2	378.1	8.3	367.5	10.3	353.4	12.5	342.8	14.6
	3600	579.5	2.8	565.4	5.6	554.8	8.6	544.2	11.4	533.6	14.3	519.4	17.2	508.8	20.0
ZZ5L	1500	466.4	2.3	448.8	4.7	434.6	7.1	420.5	9.5	402.8	11.8	388.7	14.2		
	1760	554.8	2.7	537.1	5.5	523.0	8.3	505.3	11.1	491.2	13.9	477.0	16.8	455.8	19.4
	2100	671.4	3.2	650.2	6.6	636.0	9.9	621.9	13.3	607.8	16.6	590.1	20.0	572.4	23.3
	2850	922.3	4.4	904.6	9.0	890.5	13.5	876.3	18.1	858.7	22.5	844.5	27.1	826.9	31.6

Performance based on inlet air at standard temperature of 68°F and 36% relative humidity, and discharge at an ambient pressure of 14.7psia. For performance at non-standard conditions, contact your authorized Eurus Blower representative. S=Screwed connections std. NPT. F=Flange connections. Intake and outlet pipe connections are same type and size.

## ZZ Series Vacuum Performance Data

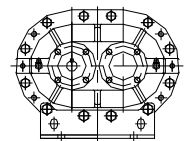
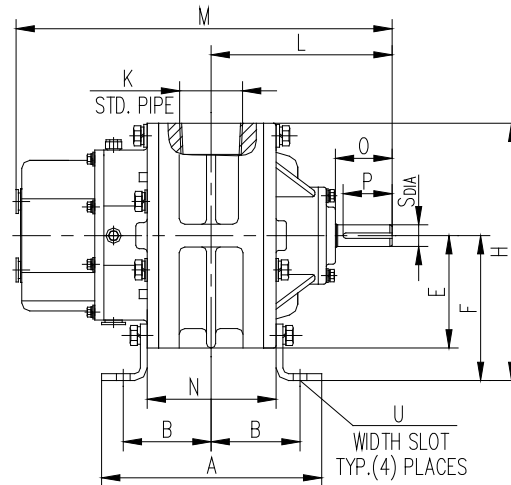
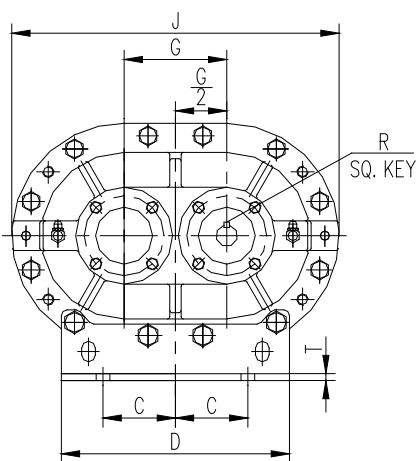
		2”HG		4”HG		6”HG		8”HG		10”HG		12”HG		14”HG		15”HG		16”HG	
Model	Blower Speed (rpm)	Inlet Flow (CFM)	Shaft Power (BHP)	Inlet Flow (CFM)	Shaft Power (BHP)	Inlet Flow (CFM)	Shaft Power (BHP)	Inlet Flow (CFM)	Shaft Power (BHP)	Inlet Flow (CFM)	Shaft Power (BHP)	Inlet Flow (CFM)	Shaft Power (BHP)	Inlet Flow (CFM)	Shaft Power (BHP)	Inlet Flow (CFM)	Shaft Power (BHP)	Inlet Flow (CFM)	Shaft Power (BHP)
ZZ2M	2800	45.9	0.3	38.9	0.5	35.3	0.8	31.8	1.1	28.3	1.3								
	3250	53.0	0.3	49.5	0.5	45.9	0.9	38.9	1.2	35.3	1.5								
	3560	60.1	0.3	56.5	0.7	49.5	0.9	45.9	1.3	42.4	1.6	38.9	2.0						
	4165	74.2	0.4	67.1	0.8	63.6	1.2	60.1	1.6	56.5	2.0	49.5	2.4	45.9	2.8				
	5275	95.4	0.4	91.9	0.9	84.8	1.5	81.3	2.0	77.7	2.5	74.2	3.0	67.1	3.5	63.6	3.8		
ZZ3M	1760	84.8	0.4	77.7	0.9	70.7	1.3	63.6	1.9	56.5	2.4	49.5	2.8						
	2265	116.6	0.5	106.0	1.2	98.9	1.9	95.4	2.4	88.3	3.1	81.3	3.8						
	2770	144.9	0.7	137.8	1.5	130.7	2.3	123.7	3.1	116.6	3.8	109.5	4.6	102.5	5.4				
	3600	194.3	0.9	187.3	1.9	180.2	3.0	173.1	3.9	166.1	5.0	159.0	5.9	151.9	7.0	144.9	7.5		
ZZ4M	1760	180.2	0.9	169.6	1.9	159.0	2.8	151.9	3.8	141.3	4.7	134.3	5.6						
	2190	229.7	1.1	219.1	2.3	208.5	3.5	201.4	4.7	190.8	5.9	183.7	7.1						
	2620	279.2	1.3	268.6	2.8	261.5	4.2	250.9	5.6	243.8	7.1	233.2	8.4	222.6	9.9				
	3600	392.2	1.9	381.6	3.9	374.6	5.8	364.0	7.8	356.9	9.8	346.3	11.7	335.7	13.7	328.6	14.6	325.1	15.7
ZZ5M	1500	272.1	1.3	258.0	2.8	247.3	4.2	236.7	5.6	226.1	7.0	215.5	8.4	201.4	9.9				
	1760	325.1	1.6	311.0	3.2	300.4	5.0	289.8	6.6	279.2	8.3	265.0	9.9	254.4	11.5				
	2100	392.2	1.9	381.6	3.9	367.5	5.9	356.9	7.9	346.3	9.9	335.7	11.8	321.6	13.8	314.5	14.9		
	2850	544.2	2.7	530.0	5.4	519.4	8.0	508.8	10.7	498.2	13.4	487.6	16.1	473.5	18.8	466.4	20.2	459.4	21.6

Performance based on inlet air at standard temperature of 68°F and 36% relative humidity, and discharge at an ambient pressure of 14.7psia. For performance at non-standard conditions, contact your authorized Eurus Blower representative. S=Screwed connections std. NPT. F=Flange connections. Intake and outlet pipe connections are same type and size.

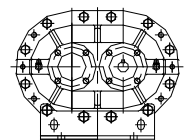
## ZZ Series Dimensional Data Horizontal Configurations (Vertical Flow)

Model	Wt.	CONN.	A	B	C	D	E	F	G
ZZ2M	48	S	7.52	2	2	6.69	3.33	3.75	2.756
ZZ2L	60	S	9.49	2.99	2	6.69	3.33	3.75	2.756
ZZ3M	88	S	9.33	3.11	2.87	7.76	3.96	5	3.543
ZZ3L	111	S	10.91	4.45	2.87	7.76	3.96	5	3.543
ZZ4M	132	S	9.57	4.13	3	7.99	4.27	6.25	4.04
ZZ4L	162	S	12.13	5.41	3	7.99	4.27	6.25	4.04
ZZ5M	217	S	12.89	4.5	3.5	8.66	5.2	7	5.079
ZZ5L	285	S	16.95	6.5	3.5	8.66	5.2	7	5.079
Model	Wt.	CONN.	H	J	K	L	M	N	O
ZZ2M	48	S	7.08	9.25	1	5.16	10	2.76	1.91
ZZ2L	60	S	7.08	9.25	2	6.16	12	4.72	1.91
ZZ3M	88	S	8.96	11.3	2	6.3	12.91	4.45	2.05
ZZ3L	111	S	8.96	11.3	2.5	7.6	15.55	7.13	2.05
ZZ4M	132	S	10.51	12.42	2.5	8.04	16.02	6.34	2.37
ZZ4L	162	S	10.51	12.42	3	9.32	18.58	8.9	2.37
ZZ5M	217	S	12.19	15.47	4	9.19	18.76	6.89	2.52
ZZ5L	285	S	12.19	15.47	4	11.22	22.81	10.94	2.52

S=Threaded connections standard NPT. F=Flange connections.  
Inlet and outlet connections are the same type and size.  
Dimensions are in inches. Weights are in pounds.



LHC  
LEFT HAND CENTRAL  
(OPTIONAL ASSEMBLY)



RHC  
RIGHT HAND CENTRAL  
(STANDARD ASSEMBLY)  
CENTER TIMED FOR ROTATION  
IN EITHER DIRECTION

## ZZ Series Dimensional Data Vertical Configurations (Horizontal Flow)

SIZE	Wt.	CONN.	A	B	C	D	E	F	G	H	J	K
2M	48	S	7.52	2	1.5	6.69	3.5	4.88	6.26	9.51	6.65	1
2L	60	S	9.49	2.99	1.5	6.69	3.5	4.88	6.26	9.51	6.65	2
3M	88	S	9.33	3.11	2.5	7.76	4.49	6.26	8.03	11.91	7.91	2
3L	111	S	10.91	4.45	2.5	7.76	4.49	6.26	8.03	11.91	7.91	2.5
4M	132	S	9.57	4.13	3	7.99	4.48	6.5	8.51	12.71	8.54	2.5
4L	162	S	12.13	5.41	3	7.99	4.48	6.5	8.51	12.71	8.54	3
5M	217	S	12.89	4.5	3.5	8.66	5.47	8.01	10.6	15.75	10.39	4
5L	285	S	16.95	6.5	3.5	8.66	5.47	8.01	10.6	15.75	10.39	4
SIZE	Wt.	CONN.	L	M	N	O	P	R	S	T	U	
2M	48	S	5.16	10	2.76	1.91	1.83	0.19	0.63	0.14	0.43x0.59	
2L	60	S	6.16	12	4.72	1.91	1.83	0.19	0.63	0.14	0.43x0.59	
3M	88	S	6.3	12.91	4.45	2.05	1.88	0.19	0.75	0.24	0.47x0.75	
3L	111	S	7.6	15.55	7.13	2.05	1.88	0.19	0.75	0.24	0.47x0.75	
4M	132	S	8.04	16.02	6.34	2.37	2.25	0.19	0.88	0.24	0.55x0.75	
4L	162	S	9.32	18.58	8.9	2.37	2.25	0.19	0.88	0.24	0.55x0.75	
5M	217	S	9.19	18.76	6.89	2.52	2.4	0.24	1.13	0.24	0.55x0.71	
5L	285	S	11.22	22.81	10.94	2.52	2.4	0.24	1.13	0.24	0.55x0.71	

S=Threaded connections standard NPT. F=Flange connections.  
Inlet and outlet connections are the same type and size.  
Dimensions are in inches. Weights are in pounds.

